

Name: _____

Job Date: _____

Company: _____

Job Reference: _____

Cellular: _____

Roofing System: TPO PVC NDL Job: Yes No

Email: _____

If NDL, Rep Name: _____

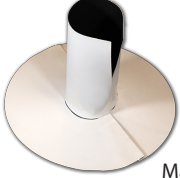
Contractor: _____

Color: White Tan Gray Dark Gray Dark Bronze

SPLIT BOOTS

Cylindrical Split Boot

Qty: _____



Size

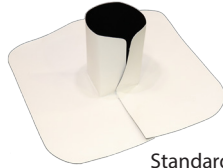
- 1" 2" 3"
 4" 5" 6"

Hose Clamp: Yes No

Made to actual size

Square/Rectangle Split Boot

Qty: _____



Size

- 2"x2"
 4"x4"

Standard corner radius is 1/8"

Conical Split Boot

Qty: _____



Size

- Bantam .5-1 (1/2"-1")
 Welter 1-3 (1"-3")
 Middle 3-5 (3"-5")
 Cruiser 5-7 (5"-7")
 Super 7-9 (7"-9")

Hose Clamp: Yes No

CLOSED BOOTS

Conical Boot



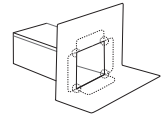
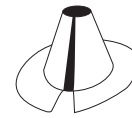
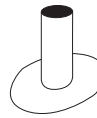
Qty: _____

- Size** Bantam .5-1 (1/2"-1")
 Welter 1-3 (1"-3")
 Middle 3-5 (3"-5")
 Cruiser 5-7 (5"-7")
 Super 7-9 (7"-9")

Hose Clamp: Yes No

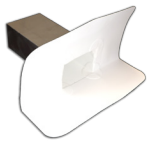
For Custom Sizes:

Use Custom Assesories Form



DRAINS

Scupper (Reinforced)



Qty: _____

Size

- 4"W x 4"H x 12"D x 6"F
 6"W x 4"H x 12"D x 6"F
 Throughwall Overflow
Type: Center Corner

Drain Boot



Qty: _____

- Size**
 2" 3"

Membrane only

VENT FLASHINGS

Easy Flapper™

Qty: _____



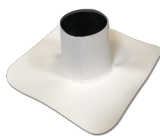
Size

- 4" 6" 8"

Add Boot: Yes No

Sub Base & Boot/Assembly

Qty: _____



Size

- 4" 4" Oval 6"
 8" 10" 12"

Breather Vent

Qty: _____

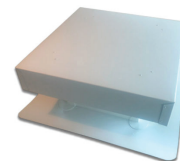


Size

- 4" Round
 8" Square
 One Way
 Two Way

Gravity Vent

Qty: _____



Size

- 12"x12"
 18"x18"
 24"x24"

Louver Vent

Qty: _____

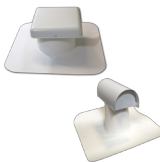


Size

- 14" x 18"
 12" x 12"
 14" x 12"

T-Top & Square Top Vents

Qty: _____



Size

- 4" T-Top
 6" T-Top
 8" T-Top
 8" Square Top
 4"x12" T-Top Box

Eyebrow Vent

Qty: _____



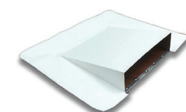
Size

- 18"
 24"

For 45° - 90° slopes

Wall Vent

Qty: _____



Size

- 12"
 16"
 24"

For 90° applications

ACCESSORIES

Qty: _____



Size

- 2"x4"x10"
 3"x3"x10"
 4' x 10' Full Sheet

Sealant Pocket

Qty: _____



Pre-Fab Size

- 4"x4" 6"x6" 8"x8"

Molded Size

- 6" x 6"-12"

Corners

Qty: _____



Size

- 6" Inside Corner
 6" Outside Corner
 Fluted Outside