



PVC SPRAY CONTACT ADHESIVE



Polyset® PVC Spray Contact Adhesive is formulated as a portable, self-containing, single component spray contact adhesive designed with speed and simplicity in mind. Engineered to adhere most PVC membranes to vertical walls and substrates for commercial low slope roofing applications.

High adhesive output with a fast set-up time for quick application which **reduces labor time**.

Adheres PVC membranes to most vertical walls and substrates.*

Can be applied **as low as 25°F (-4°C) and rising**.

1,000 bonded square feet of coverage.

VOC content of 0g/L (minus exempted compounds).

Re-usable spray gun and hose *(sold separately)*.

Low cost per applied sq ft of application.

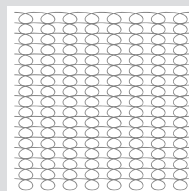
*Polyset PVC Spray Contact Adhesive does not provide adequate adhesion with PVC membranes that contain a high level of KEE (Elvaloy) additive. In addition, Polyset PVC Spray Contact Adhesive should not be used and is not compatible for use with expanded (EPS) and extruded (XPS) polystyrene board substrates.



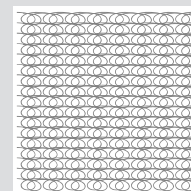
APPLICATION TIPS

- Apply a consistent and thorough coating by spraying both substrate and membrane.
- Maximum adhesion will be achieved by spraying each surface (wall and membrane) with an adhesive pattern at 90° angles (opposite direction) to each other.
 - **For example:** Spray one substrate vertically and spray the other substrate horizontally. Extra coverage is recommended at substrate edge.

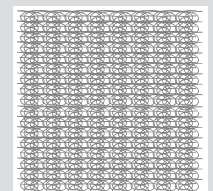
NOT ENOUGH



GOOD



TOO MUCH



PROPERTIES & CHARACTERISTICS*

COLOR	Light blue
TOTAL SOLIDS	64–70%
SPRAY PATTERN	Web
SOLIDS RAW MATERIAL	Neoprene
SOLVENT	Methyl acetate
COVERAGE	1,000 ft ² (approximately)
GROSS WEIGHT	30 lbs.
CHEMICAL TEMPERATURE	60–100°F (16–38°C)
AMBIENT TEMPERATURE	25°F (-4°C) and rising
SUBSTRATE TEMPERATURE	25°F (-4°C) and rising
OPEN TIME	10–20 minutes**
SET-UP TIME	3–5 minutes**
FULLY CURED	1–3 days**
SHELF LIFE	18 months

*See product specific TDS for additional information.

**Times may be affected by temperature, weather conditions, and humidity level.

ORDERING GUIDE

POLYSET PVC SPRAY CONTACT ADHESIVE	
PART #	DESCRIPTION
P11526	PVC SPRAY CONTACT ADHESIVE 22L KIT
CLEANER	
PART #	DESCRIPTION
62484448303	POLYSOLV 12 OZ. MULTIPURPOSE CLEANER (12 PACK)
PERSONAL PROTECTIVE EQUIPMENT (PPE)	
PART #	DESCRIPTION
F65251	CONTRACTOR SAFETY KIT (INCLUDES: SAFETY GLASSES, NITRILE GLOVES (2 PAIRS), MEDIUM SIZE NIOSH APPROVED RESPIRATOR WITH ORGANIC VAPOR CARTRIDGES, DUST/MIST PREFILTERS AND 10 HYGIENIC WIPES, TYVEK® APRON & ARM GAUNTLETS)
ACCESSORIES	
PART #	DESCRIPTION
F66537	12' STAINLESS STEEL BRAIDED HOSE (PVC)
F66538	ADJUSTABLE SPRAY GUN (WITH SPRAY TIP)
F66539	ADJUSTABLE SPRAY GUN - 18" WAND (WITH SPRAY TIP)
F66541	BRASS SPRAY TIP (I)



ALWAYS DELIVER BEST IN-CLASS TRAINING & FIELD SUPPORT

COMPANY

OVER 25 YEARS of product credibility in the market of roof adhesives.

PROFESSIONAL FOCUS only. Polyset is not sold through retail channels.

THOUSANDS OF SQUARES of roofing adhesive applied with Polyset products.

TRAINING & SUPPORT

ON THE ROOF & CLASSROOM product applicator training by highly trained professional roofing adhesive technicians.

MASTERWORKS APPLICATOR TRAINING provides continuous hands-on training, ensuring projects meet code compliance, while delivering The Polyset Promise.

SERVICES

TRUE TESTING VALUES & DATA for uplift and fire ratings, through accredited laboratories.

NO CHARGE adhesion/pull testing for our customers.

MARKET *leader*

DISTRIBUTED BY:



5103A Pottsville Pike
Reading, PA 19605
Phone: 610-916-9500
Fax: 610-916-9501
www.FlexRoofingSystems.com



2775 Barber Road | Norton, OH 44203
330-753-4585 | icpgroup.com

P00014 - Rev 11/2020