

APPROVED GYPSUM  
ROOF SHEATHING BOARD

METAL STUDS (TYPICAL)

APPROVED  
FLEX PLATE  
AND FASTENER  
12" O.C.  
THROUGH  
METAL STRIP

6" WIDE  
22 GA.  
SHEET  
METAL  
FASTENING  
STRIP

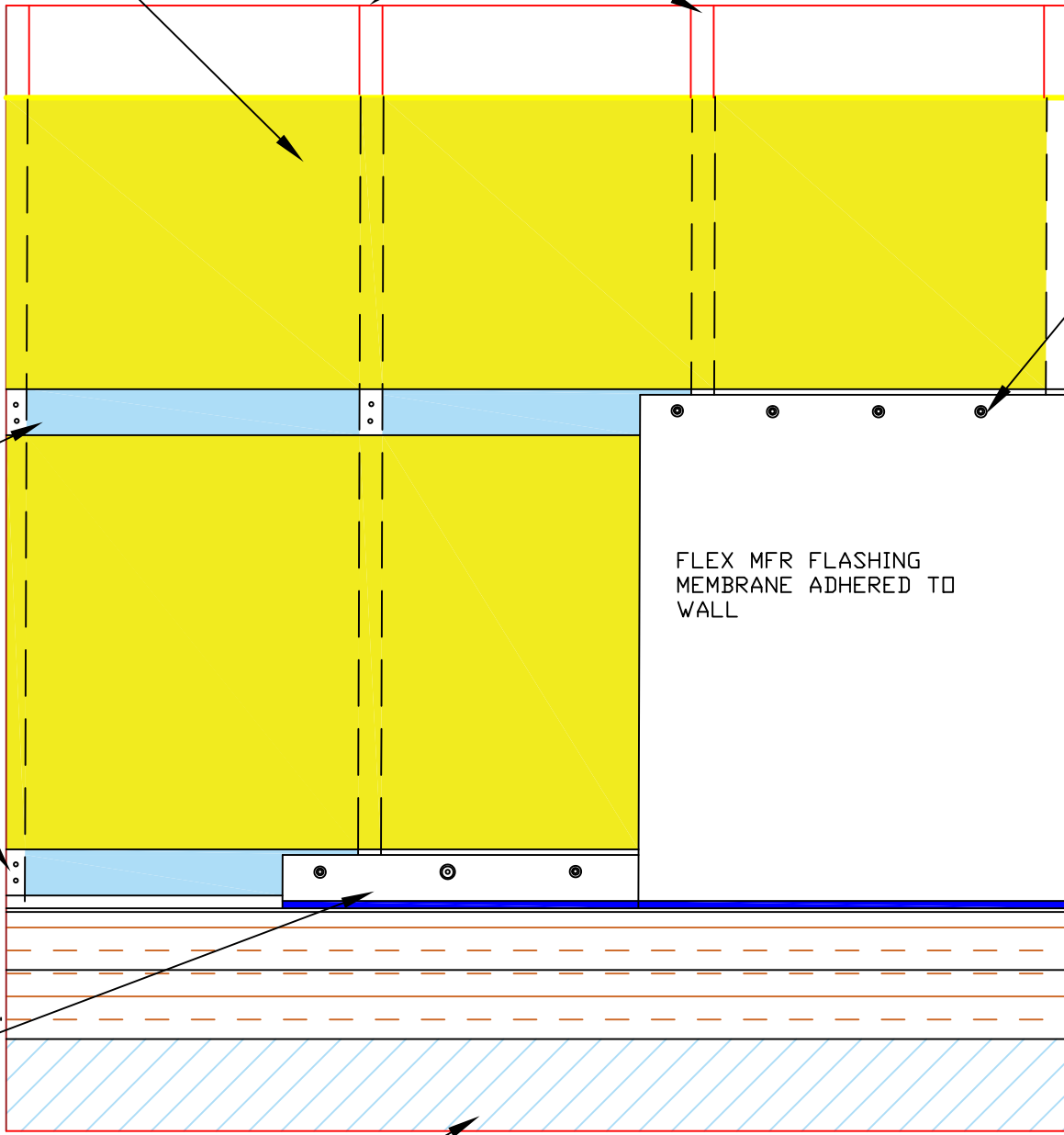
FLEX MFR FLASHING  
MEMBRANE ADHERED TO  
WALL

2 SELF  
TAPPING  
FASTENERS  
PER STUD

FLEX FIELD  
MEMBRANE  
FASTENED AT  
BASE OF  
WALL APPROX.  
4" HEIGHT

INSULATION  
AND  
COVER BOARD

STRUCTURAL DECK



TITLE	WALL FLASHING WITH METAL BACKING STRIP
NAME:	DETAIL 2.70
DRAWN BY:	MG
DATE:	4/1/2022
APPLICABLE TO ALL	
FLEX ROOFING SYSTEMS	
FLEX MEMBRANE INTERNATIONAL	5103A POTTSVILLE PIKE READING, PA 19605 800-969-0108 FLEXROOFINGSYSTEMS.COM